

REV.
C

RATIONALE

LIMITED SCOPE REVISION IS REQUIRED TO ADD AN APPLICABLE AS22520 TOOL PART NUMBER TO TABLE 3 FOR BIN CODE 359 AND TO CHANGE THE FSC TO 5999.

NOTICE

THE COMPLETE REQUIREMENTS FOR PROCURING THE PRODUCT DESCRIBED HEREIN SHALL CONSIST OF THIS DOCUMENT AND THE LATEST ISSUE OF AS39029.

AS39029/57™

BIN COLOR BANDS

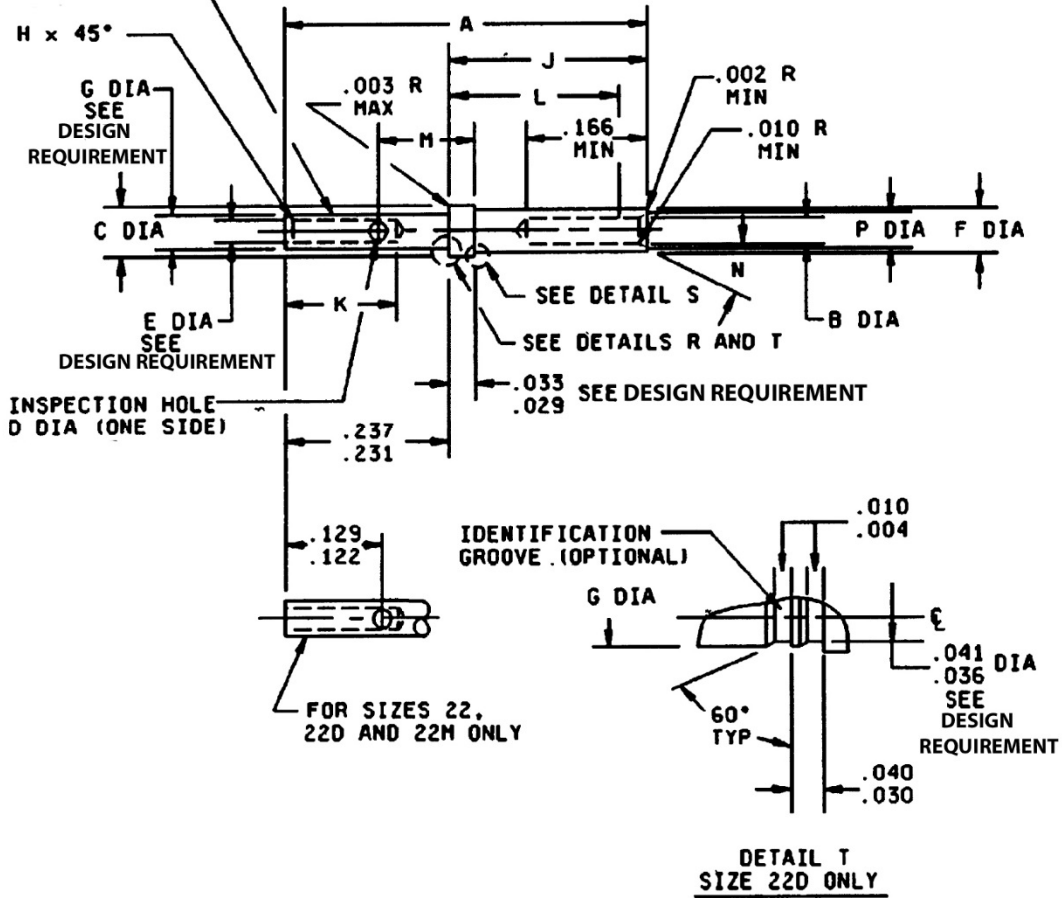
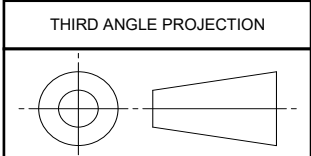


FIGURE 1 - CONNECTOR CONTACT

For more information on this standard, visit
<https://www.sae.org/standards/content/AS39029/57C/>



CUSTODIAN: AE-8C1

PROCUREMENT SPECIFICATION: AS39029



AEROSPACE STANDARD

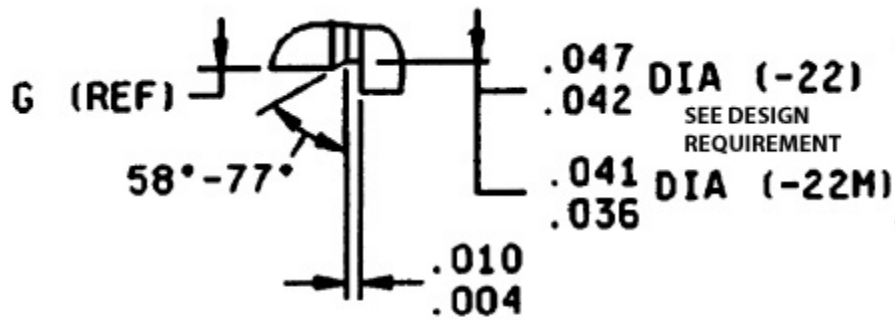
CONTACTS, ELECTRICAL CONNECTORS, SOCKET CRIMP
 REMOVABLE (FOR MIL-DTL-24308, MIL-DTL-38999 SERIES II,
 MIL-DTL-55302/68, /71, /72, /75 AND MIL-DTL-83733 CONNECTORS)

AS39029™/57
 SHEET 1 OF 6

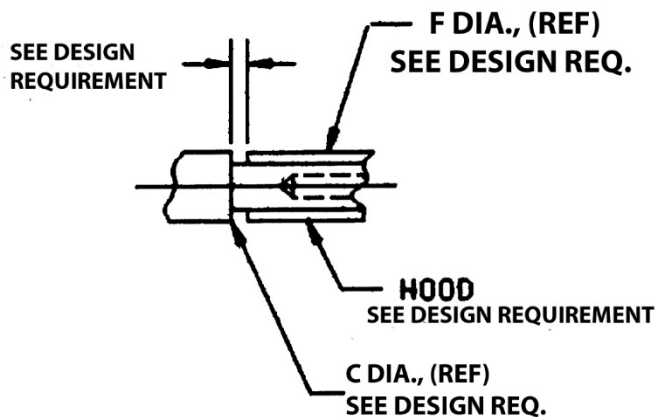
REV. C

SAE Technical Standards Board Rules provide that: "This report is published by SAE to advance the state of technical and engineering sciences. The use of this report is entirely voluntary, and its applicability and suitability for any particular use, including any patent infringement arising therefrom, is the sole responsibility of the user." SAE reviews each technical report at least every five years at which time it may be revised, reaffirmed, stabilized, or cancelled. SAE invites your written comments and suggestions.

ISSUED 2000-07 REAFFIRMED 2020-04 REVISED 2021-01



**DETAIL R
SIZES 22, 22M ONLY**



DETAIL S (ALL SIZES)

FIGURE 1 - CONNECTOR CONTACT (CONTINUED)

TABLE 1 - CONNECTOR CONTACT

BIN CODE	A REF	B DIA (MIN)	C DIA	D DIA	E DIA	F DIA MAX	G DIA	H
354, 982	.518 (13.16)	.031 (0.79)	.062 (1.57) .060 (1.52)	.022 (0.56) .018 (0.46)	.0355 (0.90) .0335 (0.85)	.062 (1.57)	.048 (1.22) .046 (1.17)	.005 (0.13) .003 (0.08)
355		.031 (0.79)	.062 (1.57) .060 (1.52)	.022 (0.56) .018 (0.46)	.029 (0.74) .027 (0.69)	.062 (1.57)	.046 (1.17) .044 (1.12)	
356		.031 (0.79)	.071 (1.80) .069 (1.75)	.022 (0.56) .018 (0.46)	.0375 (0.95) .0355 (0.90)	.062 (1.57)	.052 (1.32) .050 (1.27)	
357		.0415 (1.05)	.094 (2.39) .091 (2.31)	.032 (0.81) .026 (0.66)	.048 (1.22) .046 (1.17)	.078 (1.98)	.070 (1.78) .068 (1.73)	.010 (0.25) .005 (0.13)
358		.064 (1.63)	.130 (3.30) .127 (3.23)	.042 (1.07) .036 (.914)	.068 (1.73) .066 (1.68)	.113 (2.87)	.103 (2.62) .101 (2.57)	
359		.0955 (2.43)	.182 (4.62) .179 (4.55)	.042 (1.07) .036 (.914)	.102 (2.59) .098 (2.49)	.161 (4.09)	.151 (3.84) .148 (3.76)	.016 (0.41) .005 (0.13)